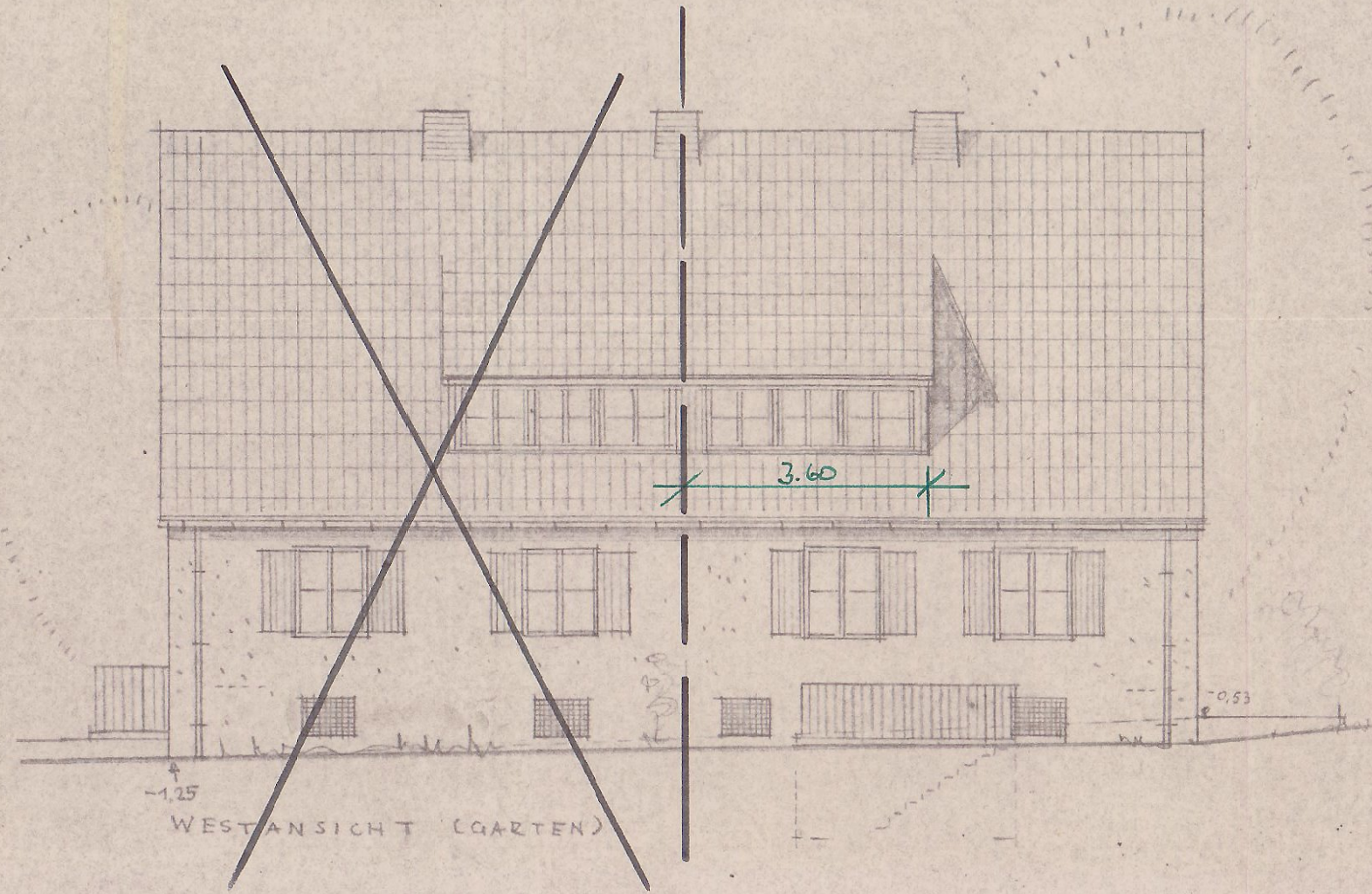
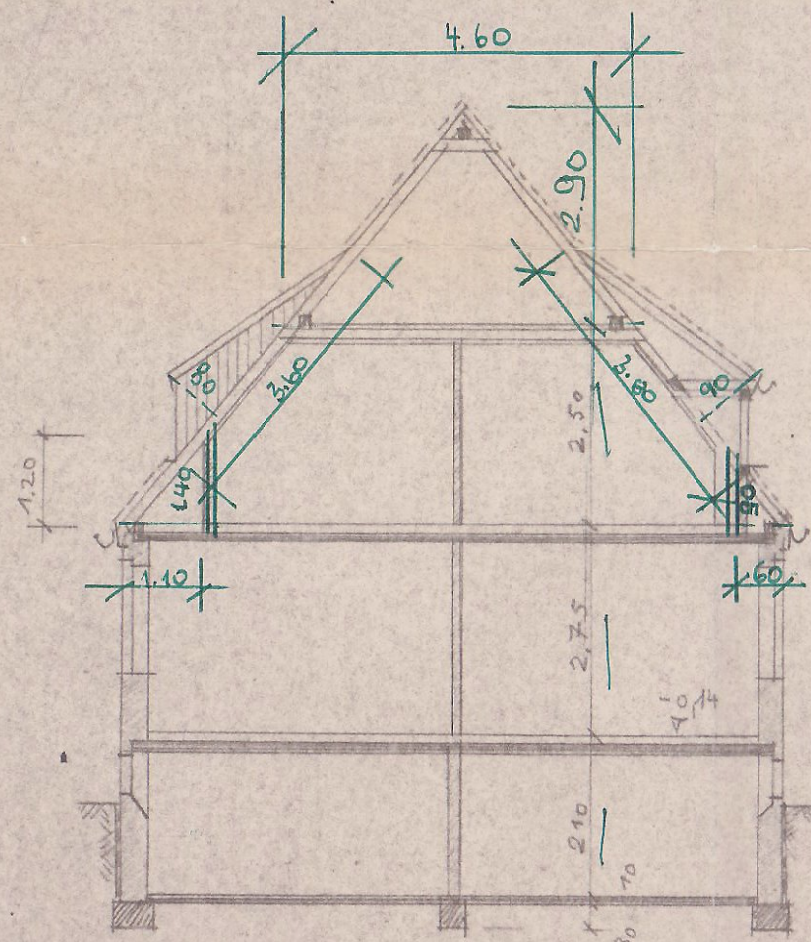
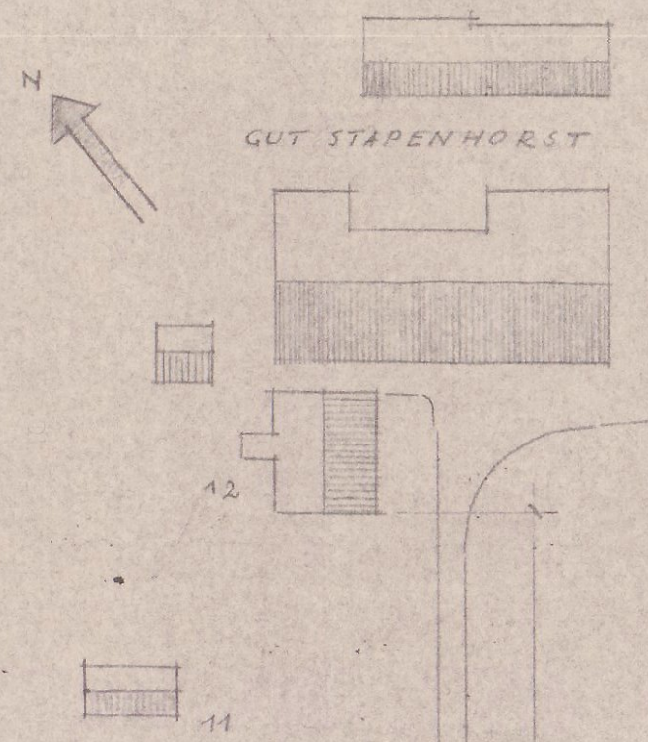


OSTANSICHT (STRASSE)

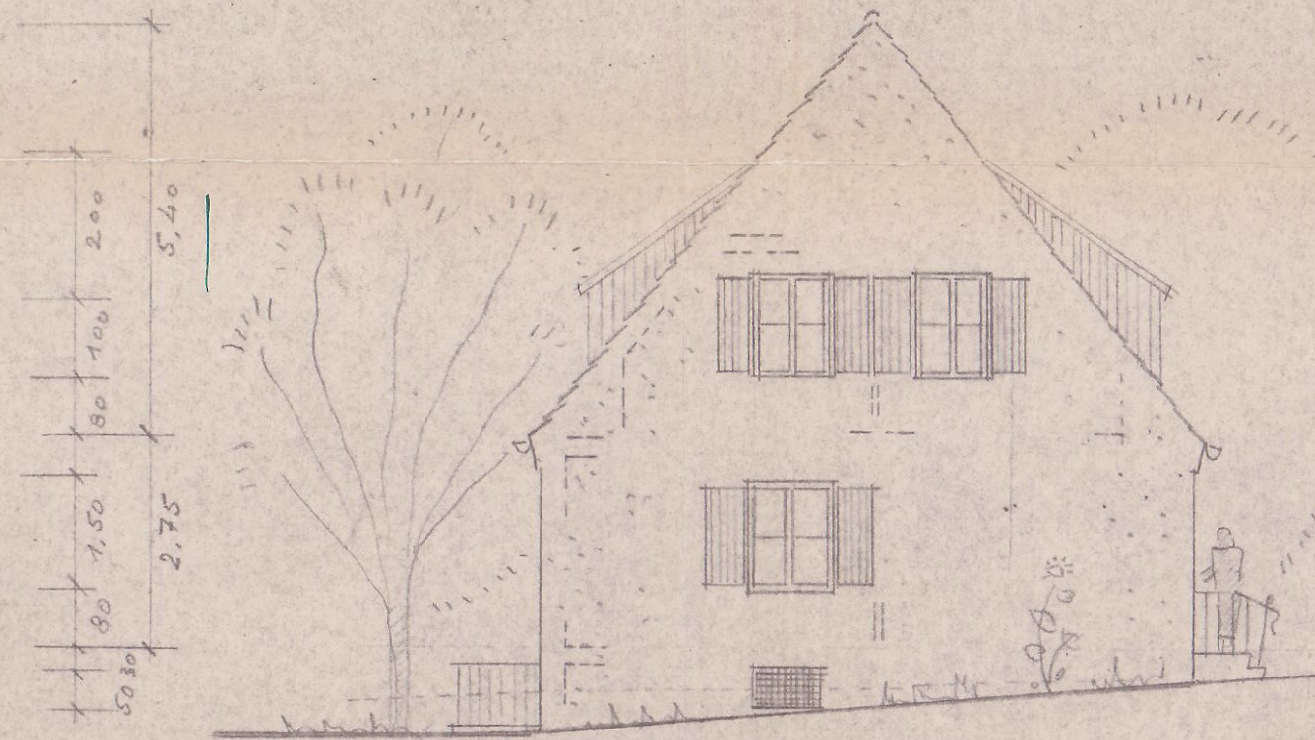


WESTANSICHT (GARTEN)

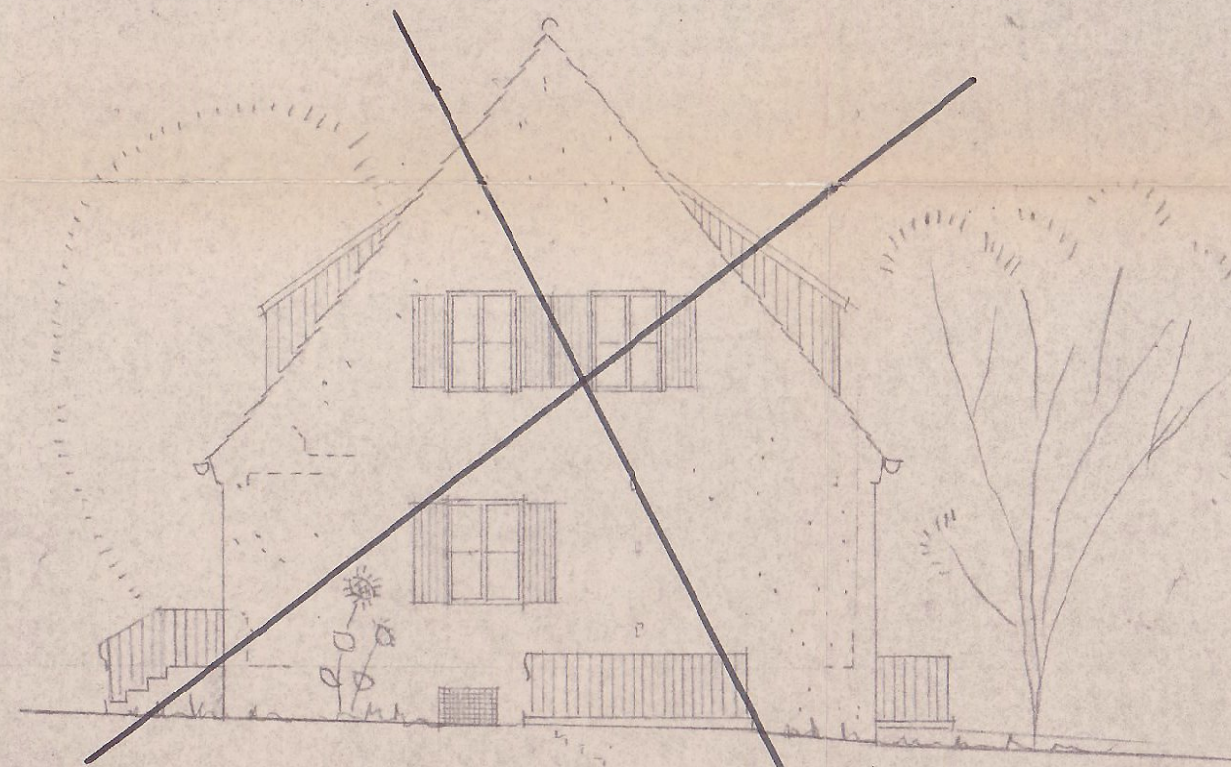
LAGEPLAN 1:1000



QUERSCHNITT



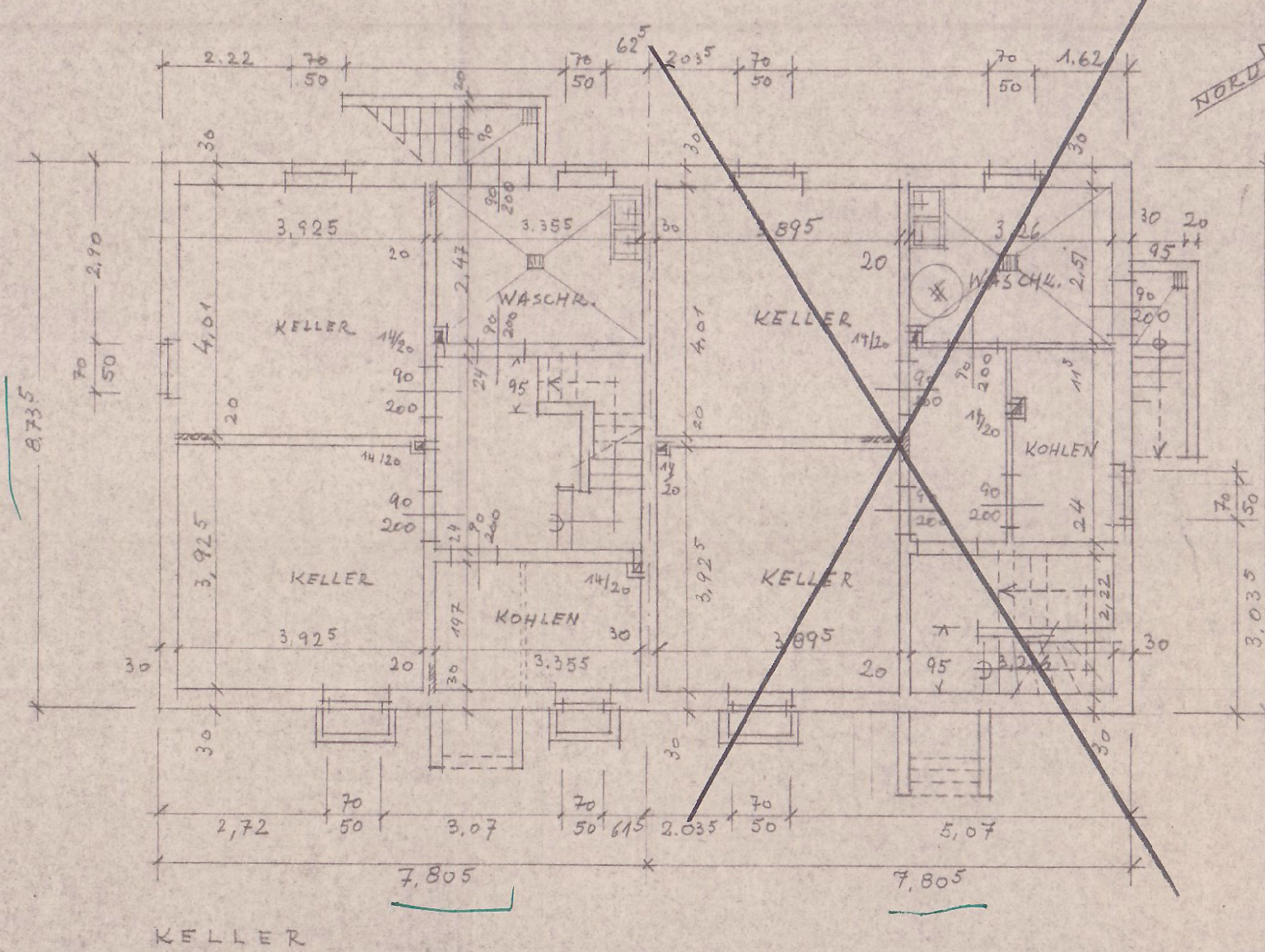
SÜDGIEBEL



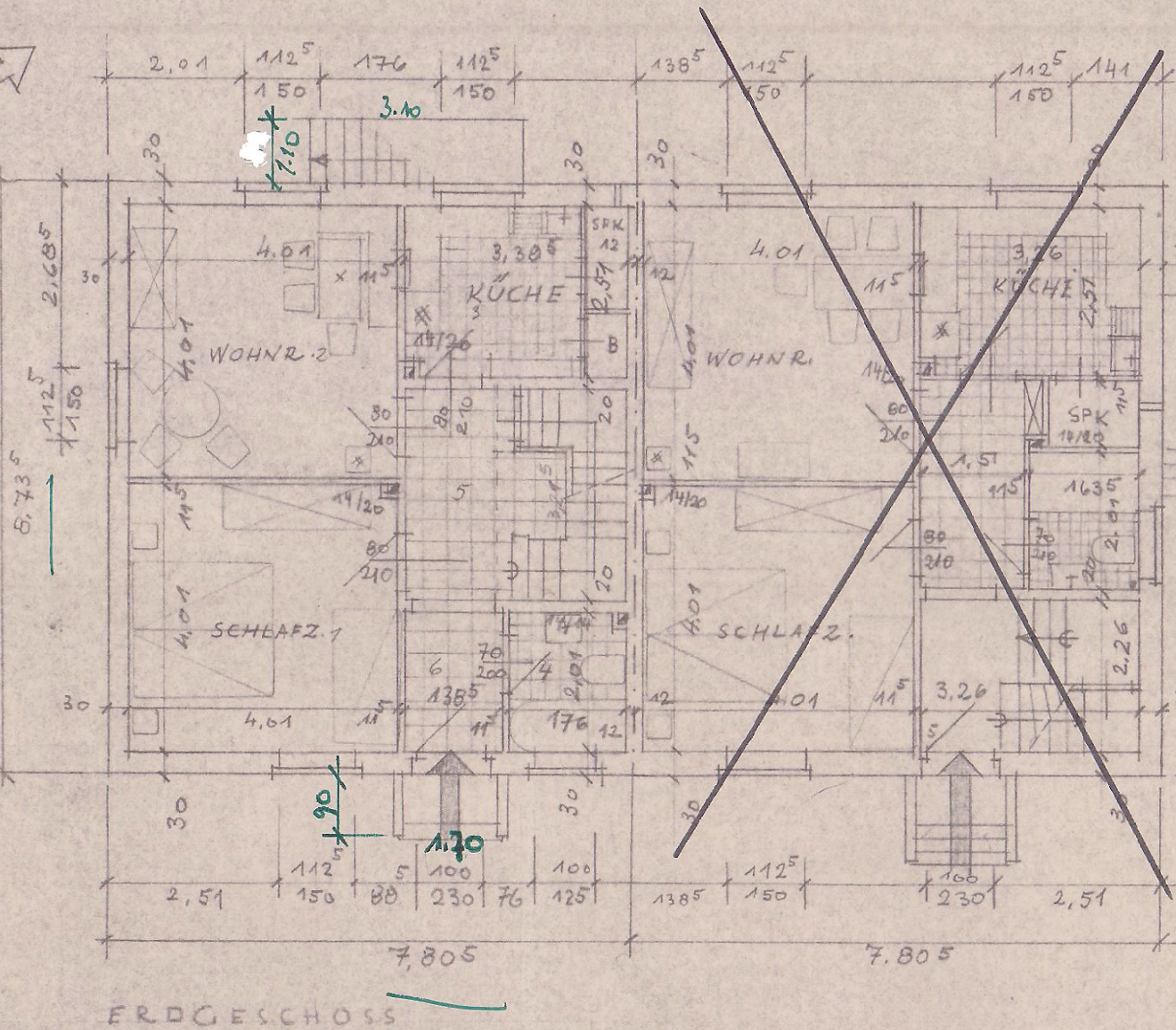
NORDGIEBEL

ORDINATEN

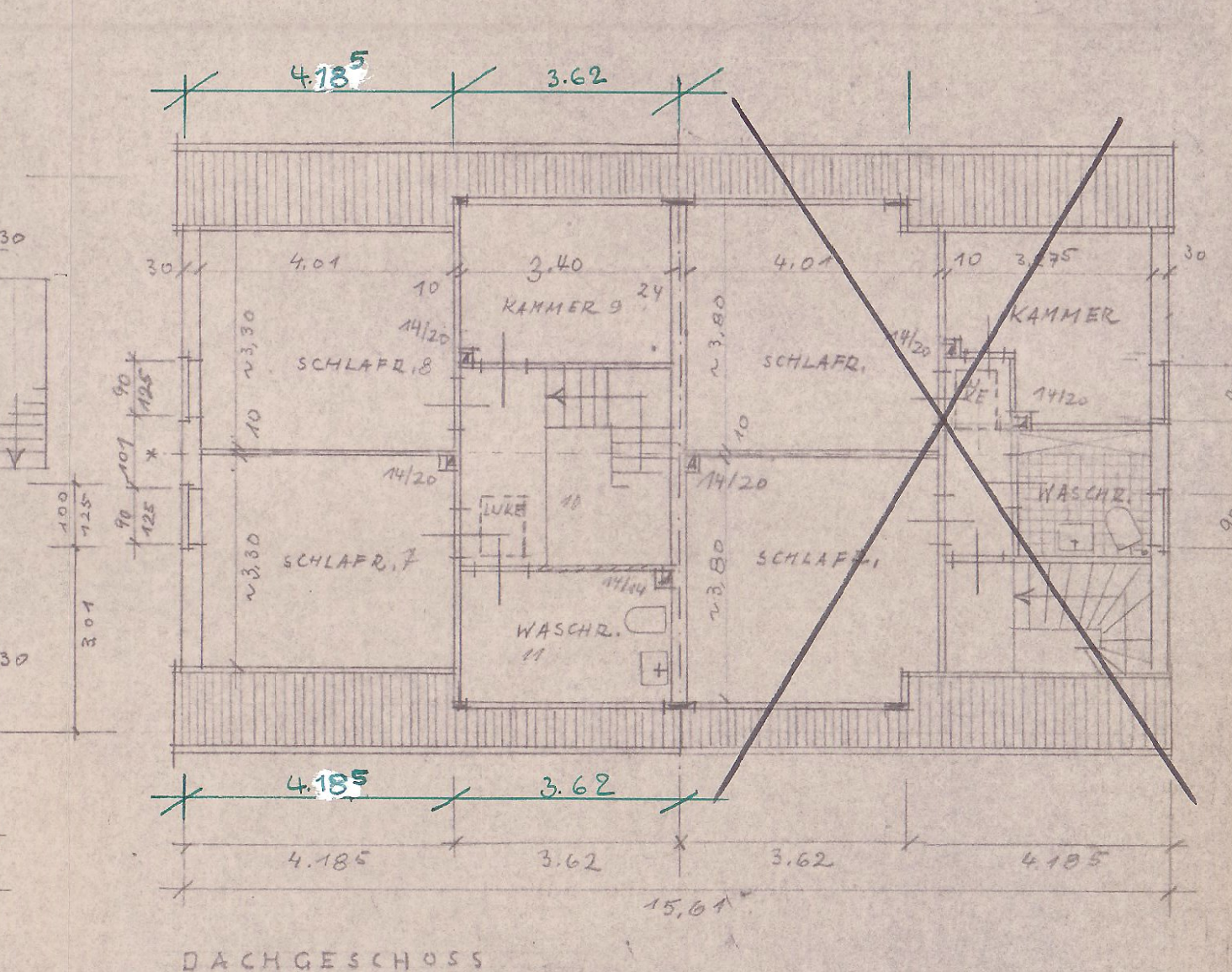
1	0.37 m
2	0.74 m
3	1.11 m
4	1.48 m
5	1.85 m
6	2.22 m
7	2.59 m
8	2.96 m
9	3.33 m
10	3.70 m
11	4.07 m
12	4.44 m



KELLER



ERDGESCHOSS



DACHGESCHOSS

MÜNSTERIWESTF., DEN 7.6. 1955
LANDSCHAFTSVERBAND WESTFALEN-LIPPE
HOCHBAUABTEILUNG
L. A.

Landesbauamt