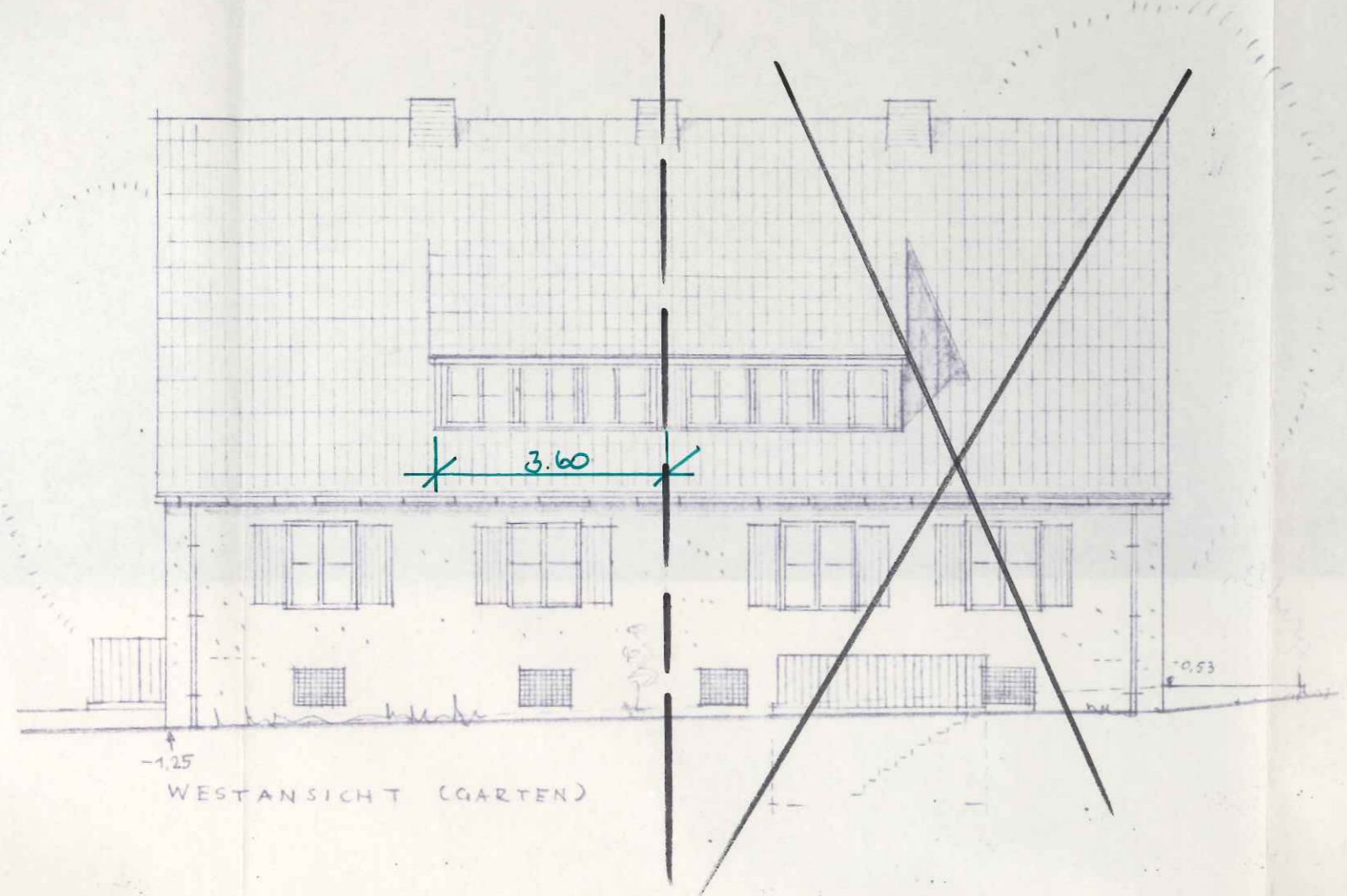
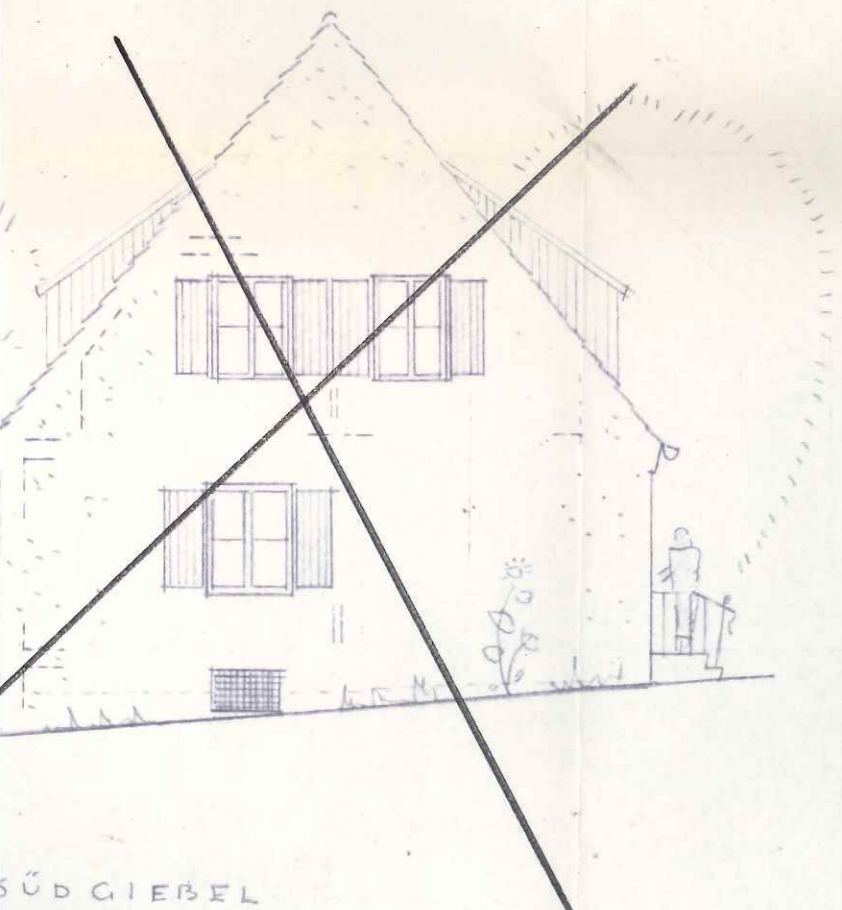


- DOPPELHAUS ZUM GUT STAPENHORST DER L.H.A. LENGERICH 1:100
 D.W. 53/54



WESTANSICHT (GARTEN)

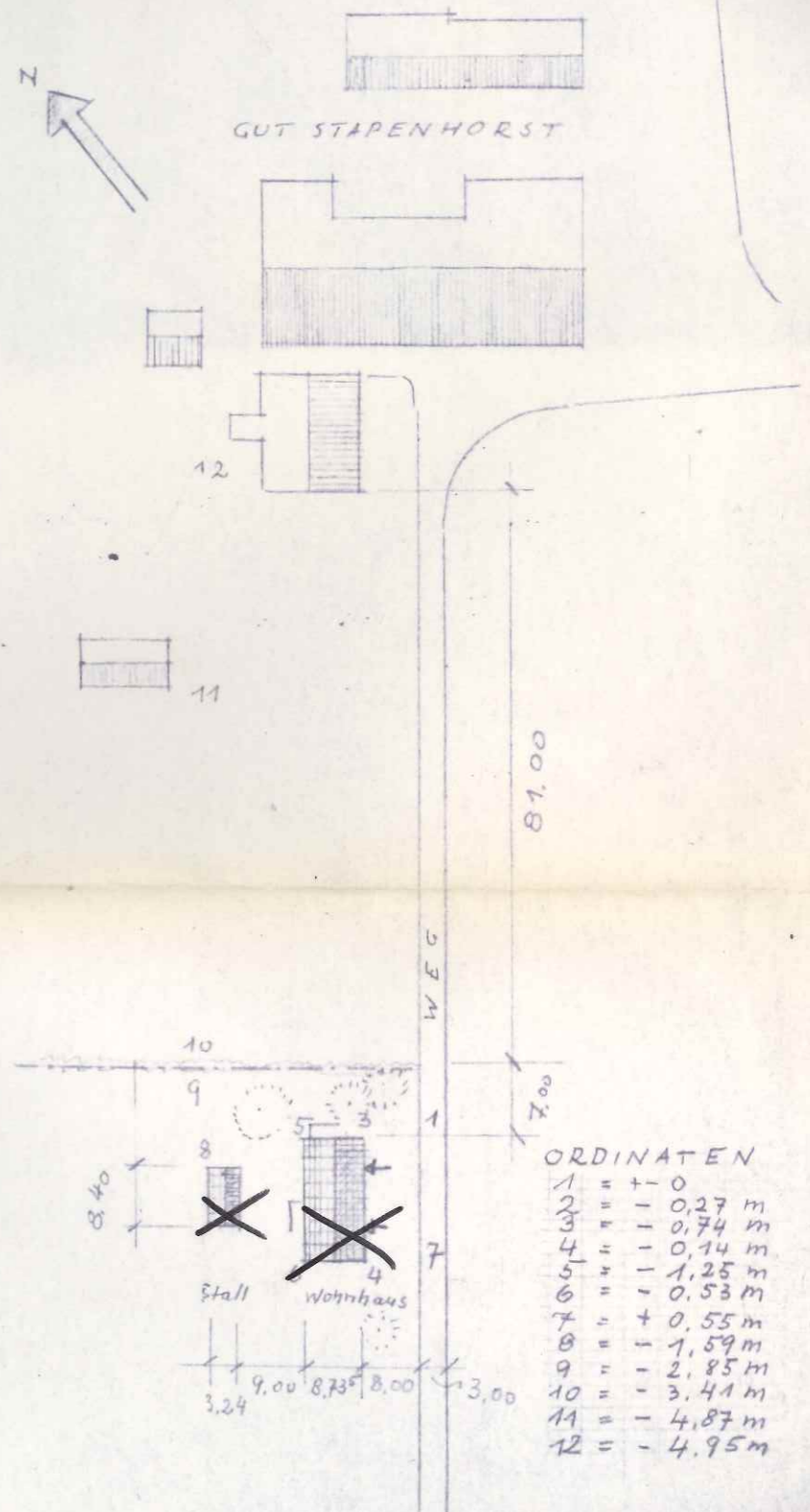


SÜDGIEBEL



NORDGIEBEL

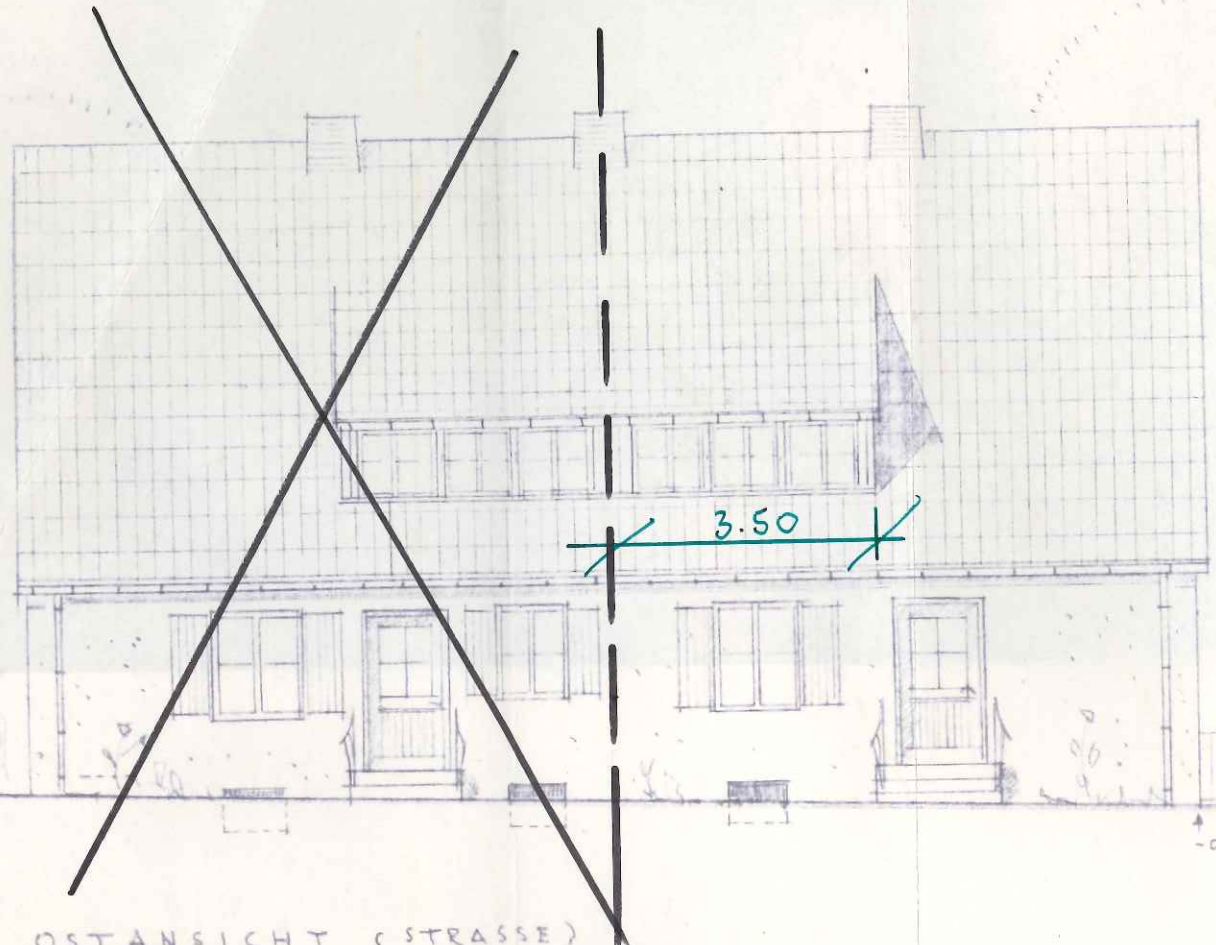
LAGEPLAN 1:1000



ORDINATEN

1	= + 0
2	= - 0,27 m
3	= - 0,74 m
4	= - 0,14 m
5	= - 1,25 m
6	= - 0,53 m
7	= + 0,55 m
8	= - 1,59 m
9	= - 2,85 m
10	= - 3,41 m
11	= - 4,87 m
12	= - 4,95 m

ENTWURF FÜR EIN LANDARBEITER - D



OSTANSICHT (STRASSE)

